



GAT MONTHLY MEMBERSHIP PROGRESS REPORT

Results as of: 4/30/2023

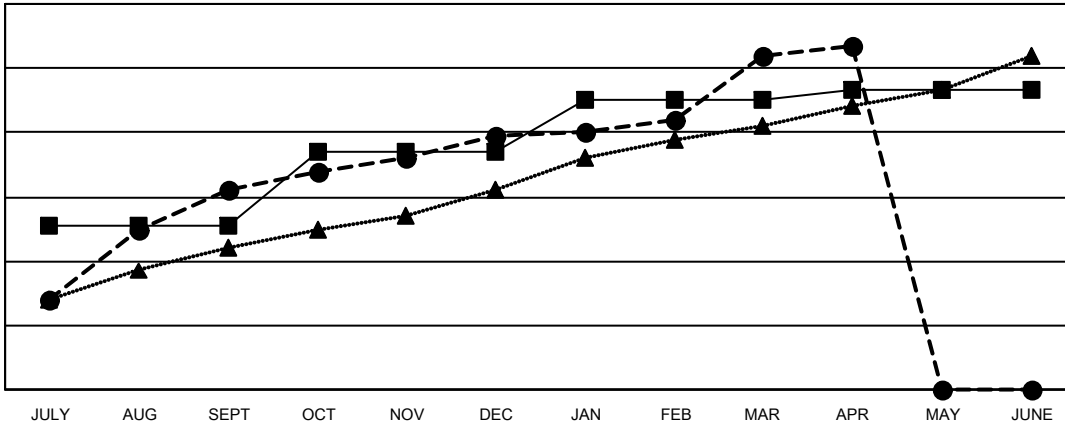
Multiple District 322

LOCATION: INDIA

Clubs			
RESULTS FOR 2022-2023			
QUARTER	NEW CLUB GOAL	NEW CLUBS	DROPPED CLUBS
JULY/AUG/SEPT	51	62	15
OCT/NOV/DEC	23	17	43
JAN/FEB/MAR	16	25	23
APR/MAY/JUNE	3	3	1

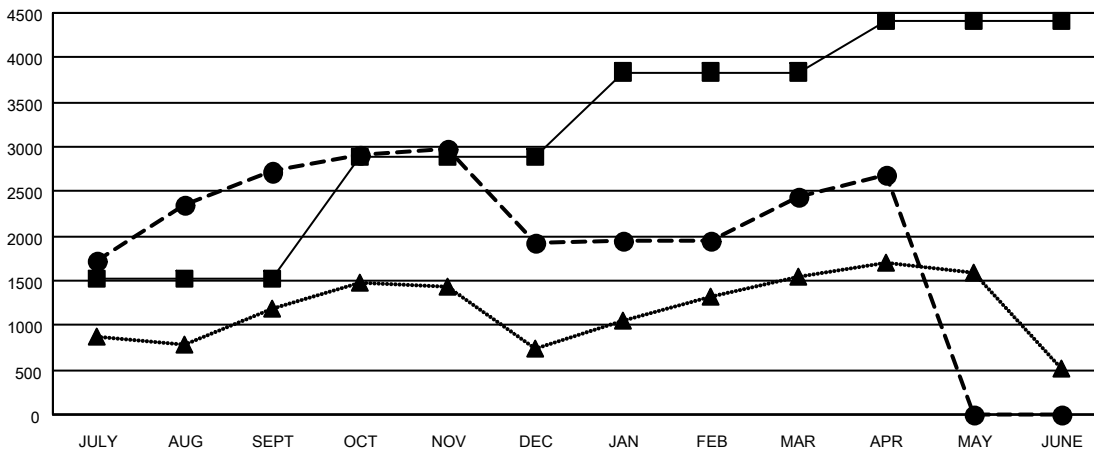
Members			
RESULTS FOR 2022-2023			
QUARTER	MEMBER GROWTH NET GOAL	MEMBER GROWTH ACTUAL	DROPPED MEMBERS ACTUAL (including transfers)
JULY/AUG/SEPT	1523	3,594	731
OCT/NOV/DEC	1363	1,537	2,231
JAN/FEB/MAR	953	1,395	671
APR/MAY/JUNE	575	444	161

GOALS AND ACTUAL NEW CLUBS CUMULATIVE



- - CURRENT YEAR GOALS FOR NEW CLUBS
- - CURRENT YEAR ACTUAL NEW CLUBS
- ▲ - LAST YEAR ACTUAL NEW CLUBS

GOALS AND ACTUAL MEMBERS CUMULATIVE



- - MEMBER GROWTH NET GOAL
- - MEMBER GROWTH ACTUAL
- ▲ - LAST YEAR MEMBERSHIP ACTUAL

DROPPED CLUBS: 82	
DROPPED MEMBERS	
DECEASED	101
CLUB CANCELLED	1,215
OTHER	2,478
TOTAL	3,794

721 CLUBS OF 1153 ADDED 1 OR MORE NEW MEMBERS

[CLICK HERE FOR CUMULATIVE MEMBERSHIP DATA](#)

GENDER DISTRIBUTION	
MALE	27,193 (67.95%)
FEMALE	12,817 (32.03%)
NON BINARY	0 (0.00%)
PREFER NOT TO ANSWER	11 (0.03%)
TOTAL FAMILY UNIT MEMBERS	21,776
FAMILY MEMBERS PAYING HALF DUES	13,465